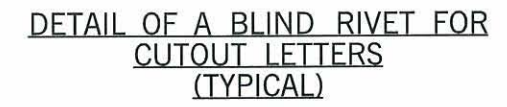
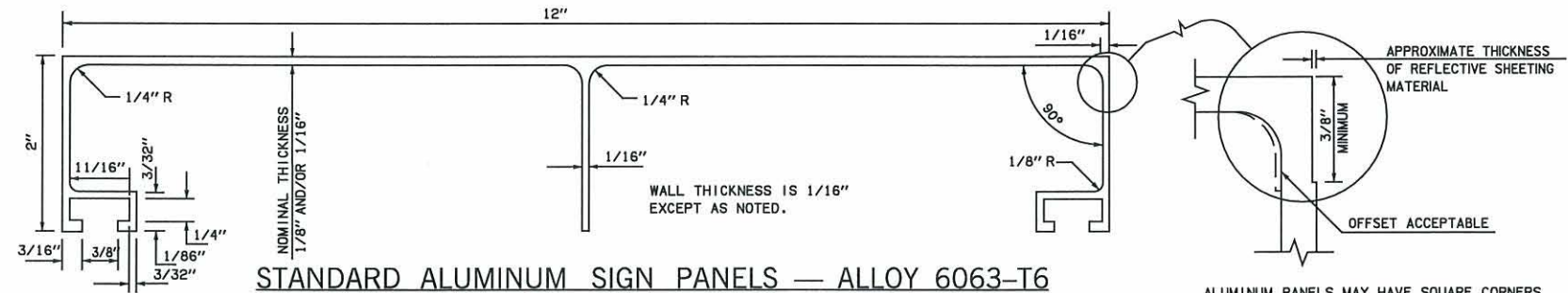
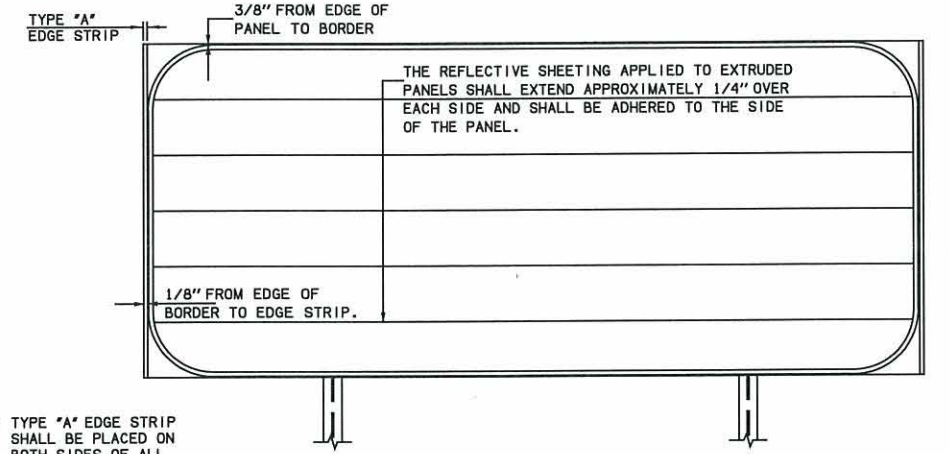
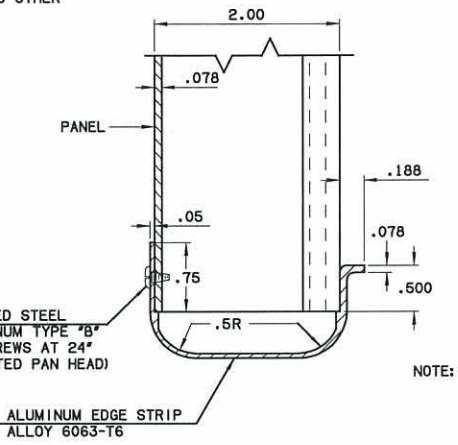
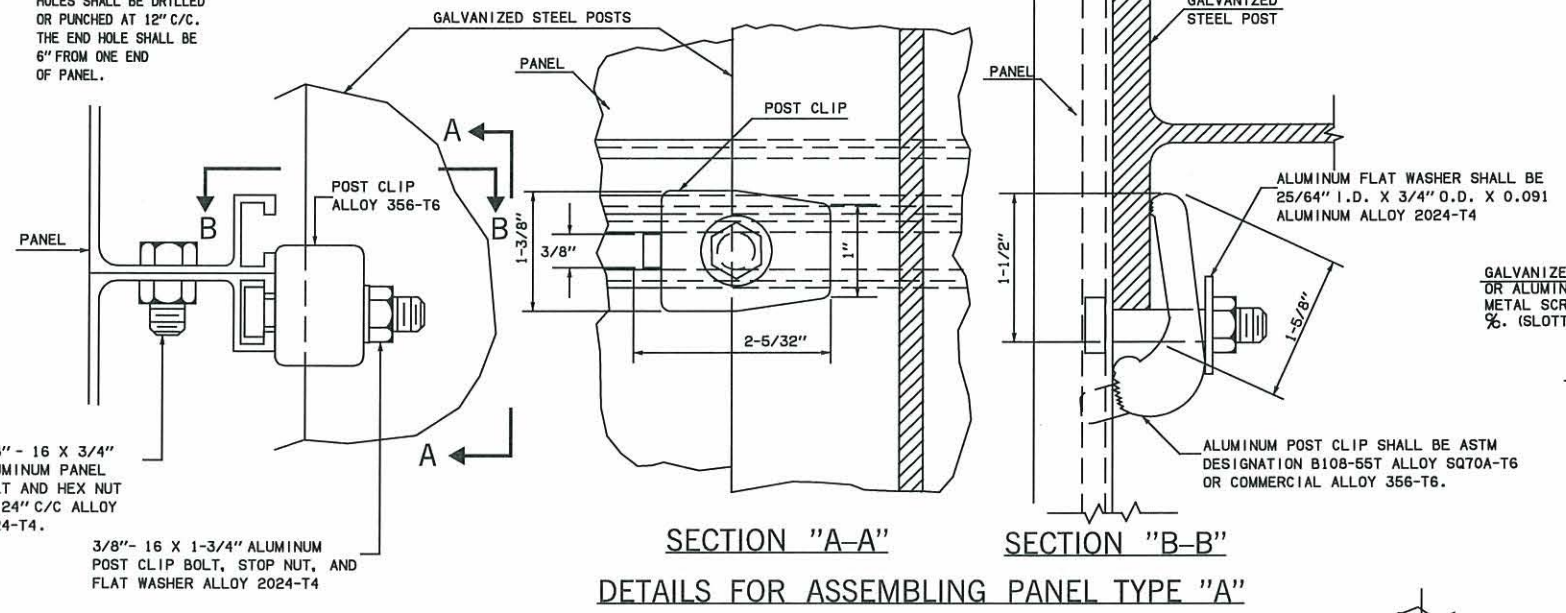


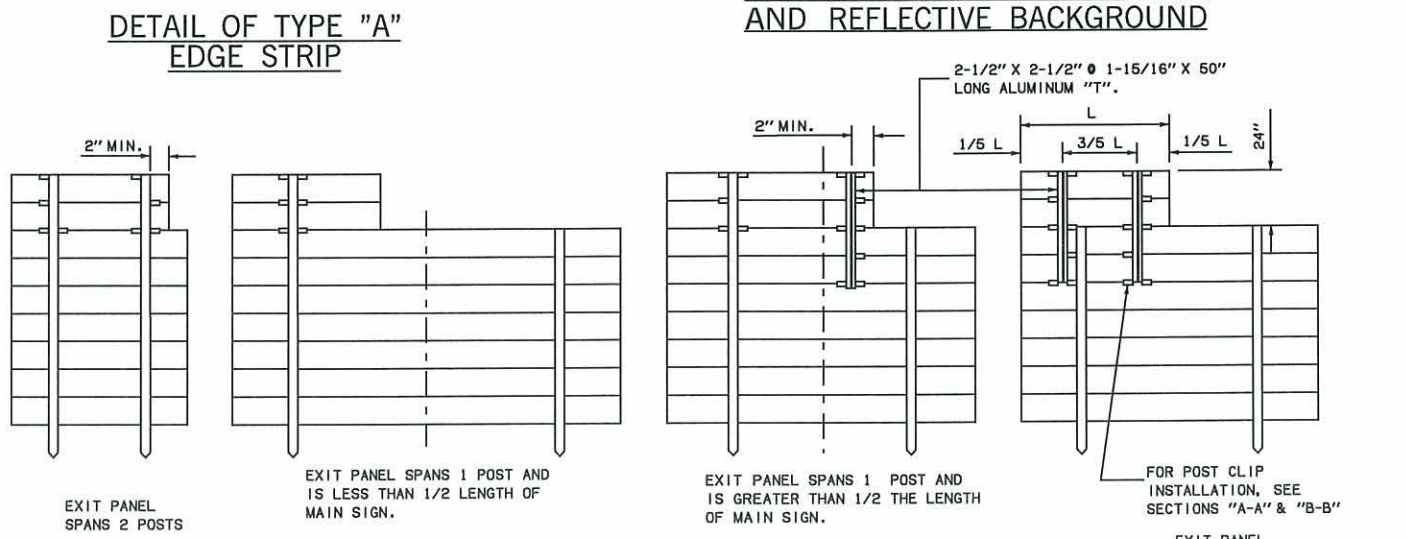
DESCRIPTION	REVISIONS	DATE
DETAIL TYPE 'A' EDGE STRIP		1/12/02



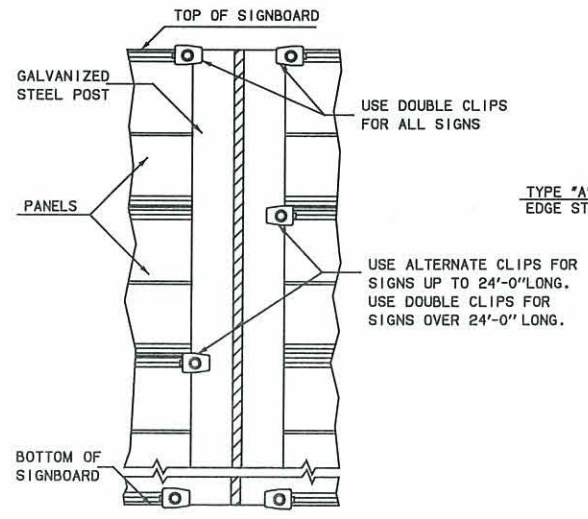
7/16" X 7/8" SLOTTED HOLES SHALL BE DRILLED OR PUNCHED AT 12" C/C. THE END HOLE SHALL BE 6" FROM ONE END OF PANEL.



TYPICAL ASSEMBLY OF BORDER AND REFLECTIVE BACKGROUND



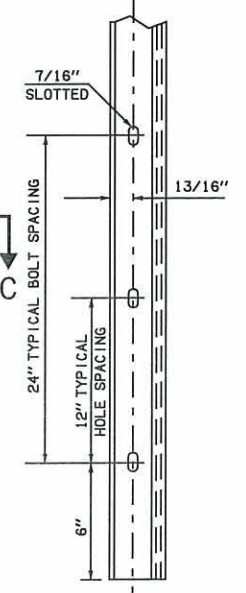
TYPICAL DETAILS FOR MOUNTING EXIT PANEL SIGNS



DETAIL OF POST CLIP LOCATION

SECTION "A-A" SECTION "B-B" DETAILS FOR ASSEMBLING PANEL TYPE "A"

TYPICAL ERECTION OF SIGN PANELS AND DETAILS OF AUXILIARY SIGN

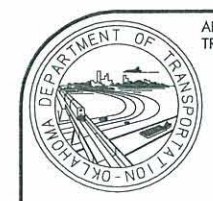


SECTION "C-C"

NOTES:
 EXIT NUMBER SIGNS SHALL BE MOUNTED ON THE EXTREME RIGHT OF GUIDE SIGNS FOR RIGHT EXITS OR EXTREME LEFT FOR LEFT EXITS.
 EXIT NUMBER SIGN PANEL SHALL BE BOLTED TO MAIN SIGN -- SEE SECTION "C-C" THIS SHEET.
 EDGE OF EXIT NUMBER SIGN SHOULD NOT EXTEND BEYOND EDGE OF MAIN SIGN.
 "T" BRACES AND POST CLIPS SHALL BE PAID FOR IN PRICE BID FOR OTHER ITEMS OF WORK.
 GALVANIZED STEEL "T" BRACES MAY BE SUBSTITUTED FOR ALUMINUM.

NOTE: ALL NUTS SHALL BE SELF-LOCKING.

BASIS OF PAYMENT		
ITEM NO.	ITEM	UNIT
850(B)	EXTRUDED ALUMINUM PANEL SIGNS	SF



APPROVED BY TRAFFIC ENGINEER: *Thad Smith* DATE: 3/5/10

TRAFFIC STANDARD
 ALUMINUM SIGN PANELS AND ASSEMBLY DETAILS